

OUTLOOK®

ANYTHING ELSE IS A COMPROMISE!

EXTERIOR BLINDS | AWNINGS | UMBRELLAS



OUTLOOK®

ANYTHING ELSE IS A COMPROMISE!

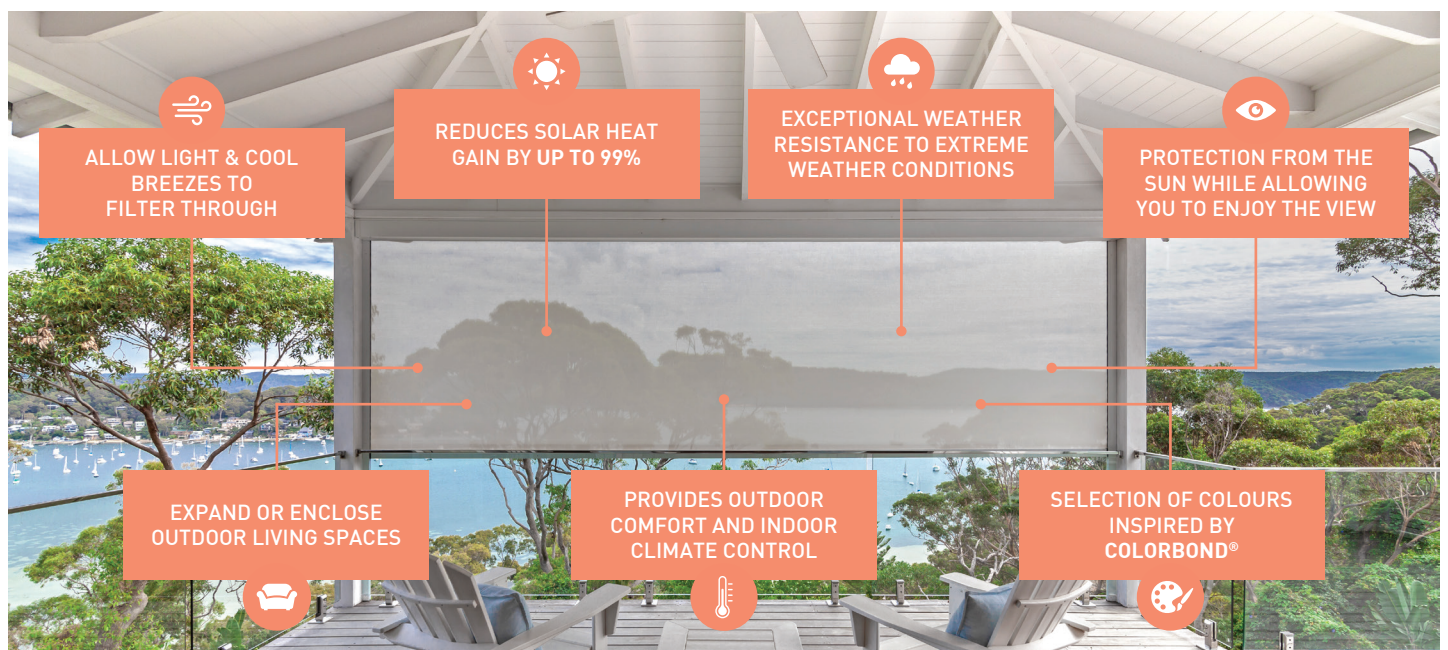
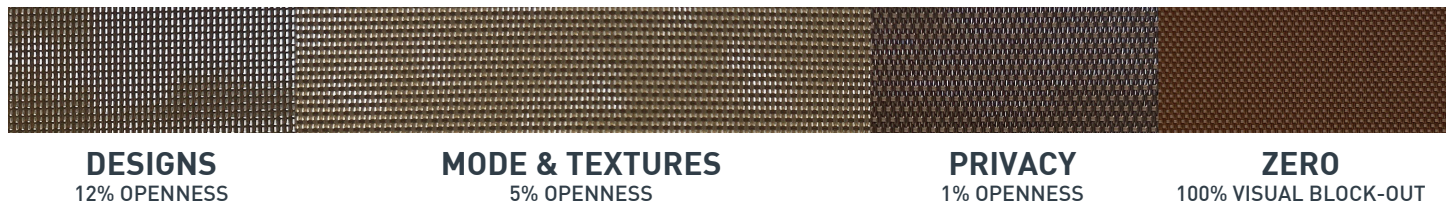
For decades Outlook has been Australia's market leading outdoor mesh and with good reason. The Outlook Collection is the most comprehensive available with a combination of modern and contemporary colours in a variety of textures and qualities. Through constant development and innovation, the Outlook Collection delivers performance and functionality like no other.



Outlook is manufactured by the American based global leader of solar control fabrics, Phifer Incorporated. Manufactured using stringent quality control systems and the latest technology, Outlook is the benchmark for outdoor mesh in Australia. Innovation is in the Phifer DNA with industry leading initiatives such as Dow Ecolibrium and Microban.

- Blind and awning systems using Outlook mesh will extend outdoor areas for all year-round living, maintaining temperature control and providing a seamless connection for indoor and outdoor environments.
- Outlook filters ultra-violet rays, offering protection without compromising the visual aspect.
- Manufactured using the bio-based Dow Ecolibrium plasticiser technology, using Outlook will save on average one litre of a petroleum for each outdoor blind.
- Outlook fabrics are designed for commercial environments and are tested to the relevant Australian standards.
- Outlook mesh naturally creates a cooler environment outside, and assists with lowering energy costs inside.

OUR MARKET LEADING RANGE



OUTLOOK®

THE OUTLOOK ADVANTAGE



FULL 10-YEAR UV WARRANTY

Outlook is a proven performer under the Australian elements and is supported with an industry leading full 10-year UV warranty.



GREENGUARD® GOLD

Outlook is engineered with environmental responsibility as one of its key criteria. The lead and phthalate free formulation provides low emissions and is Gold Level certified by Greenguard.



MICROBAN®

Outlook fabrics include Microban anti-microbial technology. This provides ease of maintenance by inhibiting mould and mildew growth.



DOW ECOLIBRIUM™

Outlook features the exclusive bio-based Dow Ecolibrium plasticiser technology which reduces greenhouse gases by 40%. Dow Ecolibrium preserves the equivalent of 1 litre of oil for every 10 square metres of fabric compared to petroleum-based equivalents.



FIRE RETARDANT

Outlook fabrics are designed for commercial environments and are tested to the relevant Australian standards.



DURABLE AND EASY TO MAINTAIN

The Outlook collection is as durable as it is stylish and is designed to handle high traffic applications with ease. Outlook mesh is easy to maintain and only requires occasional cleaning using a mild detergent then rinsing with clean water. Comprehensive care details are available on the Ricky Richards website or by request from Ricky Richards (Sales) P/L.



COLORBOND®

Selection of colours throughout the Outlook collection are inspired by Colorbond® matching any existing outdoor theme.



LEAD-FREE

Outlook fabrics manufactured by Phifer Incorporated are lead-free. These fabrics pass some of the most stringent US standards for heavy metals such as US Product Safety Commission Section 101 and ANSI/WCMA A100.1-2007 for lead content.



PRINTABLE

Mode Colours, Outlook Privacy and Outlook Zero colours are printable fabrics and have the printing compatibility for Solvent and UV printers.



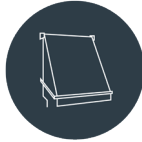
MELANOMA INSTITUTE AUSTRALIA

When you choose Outlook, you are supporting Melanoma Institute Australia. Ricky Richards proudly donates a percentage of Outlook sales to fund vital Melanoma research and prevention programs.

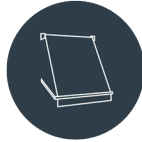
APPLICATIONS



EXTERNAL BLINDS



PIVOT ARM AWNINGS



LOCK ARM AWNINGS



SLIDING SHADE SYSTEM



OUTLOOK® MODE COLOURS

Mode is one of the most versatile products of the Outlook mesh collection with a 'do it all' reputation. The construction features a 5% openness allowing for sun and weather protection, moderate airflow and uninterrupted views.



*Inspired by COLORBOND®



FULL 10-YEAR
UV WARRANTY



UV STABILISED



LEAD-FREE



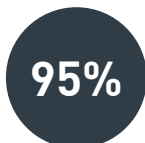
FIRE RETARDANT



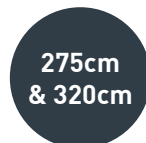
SOLVENT & UV
PRINTABLE



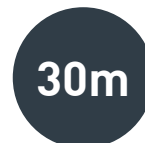
OPENNESS



SHADE COVER



ROLL WIDTHS



ROLL LENGTH



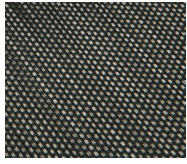
NOMINAL WEIGHT



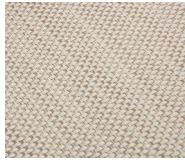
Fabric Type	2 x 2 weave, PVC coated polyester mesh		
Tensile Strength (AS 2001.2.3.1 - 2001)	Warp: 3225N/50mm Weft: 2180N/50mm	Elongation at Break	Warp: 29% Weft: 26%
Wing Rip (AS 2001.2.10-1986)	Warp: 161/N Weft: 119/N		

OUTLOOK[®] TEXTURES

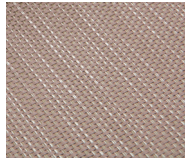
Like Mode, Textures is one of the more versatile products of the collection, with a 5% openness allowing for sun and weather protection, moderate airflow and uninterrupted views.



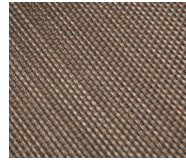
907 ANISEED



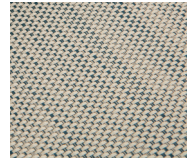
909 STUCCO



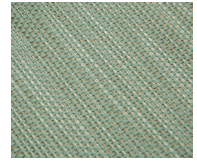
901 GOLDEN GLOW



903 SMOKEY QUARTZ



900 MILKY TOPAZ



905 PEPPERMINT



FULL 10-YEAR
UV WARRANTY



UV STABILISED



LEAD-FREE



FIRE RETARDANT



OPENNESS



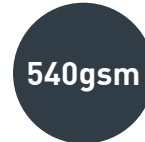
SHADE COVER



ROLL WIDTH



ROLL LENGTH



NOMINAL WEIGHT

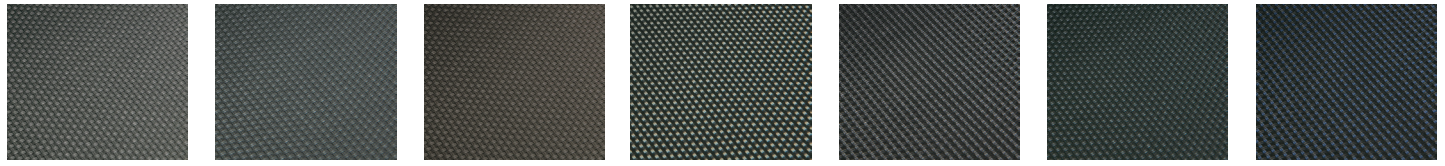


Fabric Type	2 x 2 weave, PVC coated polyester mesh & bi-colour yarn		
Tensile Strength (AS 2001.2.3.1 - 2001)	Warp: 3225N/50mm Weft: 2180N/50mm	Elongation at Break	Warp: 29% Weft: 26%
Wing Rip (AS 2001.2.10-1986)	Warp: 161/N Weft: 119/N		



OUTLOOK® PRIVACY

Our Outlook Privacy mesh features a 1% openness. This provides additional privacy and increased sun protection, while still maintaining moderate views.



411 BASALT®

401 GUNMETAL

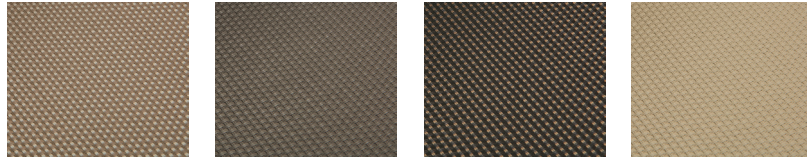
412 MONUMENT®

403 STORM

408 SHADOW

400 EBONY

407 BLACK OPAL



404 PAPERBARK®

409 COLORADO

402 CHESTNUT

406 DESERT

*Inspired by COLORBOND®



FULL 10-YEAR
UV WARRANTY



UV STABILISED



LEAD-FREE



FIRE RETARDANT



SOLVENT & UV
PRINTABLE



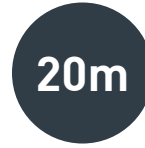
OPENNESS



SHADE COVER



ROLL WIDTH



ROLL LENGTH



NOMINAL WEIGHT



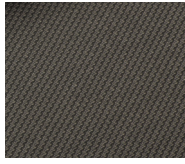
Fabric Type	2 x 2 weave, PVC coated polyester mesh		
Tensile Strength (AS 2001.2.3.1 - 2001)	Warp: 3772N/50mm Weft: 1409N/50mm	Elongation at Break	Warp: 32.6% Weft: 16.1%
Wing Rip (AS 2001.2.10-1986)	Warp: 234/N Weft: 122/N		

OUTLOOK® ZERO

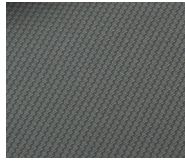
Outlook Zero offers a selection of contemporary solid and stripe colourways. The 0% openness provides exceptional weather protection and a complete visual block-out.



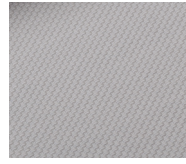
553 BLACKSTONE



542 MONUMENT®



541 BASALT®



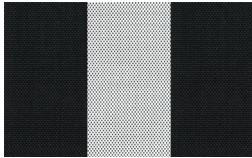
564 PLATINUM



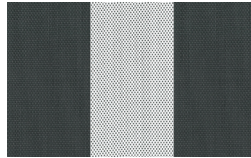
517 CHALK



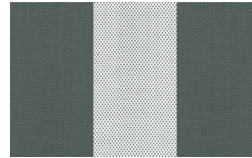
566 ALPACA



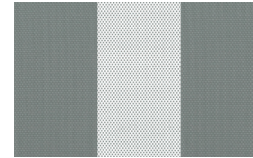
553 BLACKSTONE / CHALK



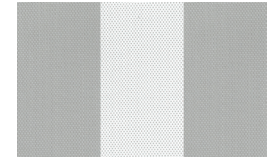
542 MONUMENT® / CHALK



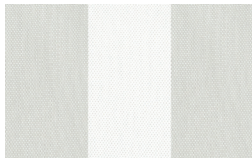
541 BASALT® / CHALK



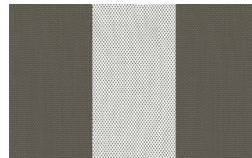
538 WINDSPRAY® / CHALK



539 SHALE GREY™ / CHALK



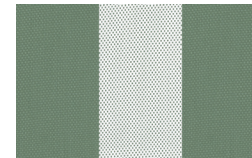
502 SURFMIST® / CHALK



540 WOODLAND GREY® / CHALK



504 SPICE / CHALK



580 PALE EUCALYPT® / CHALK

*Inspired by COLORBOND®



FULL 10-YEAR
UV WARRANTY



UV STABILISED



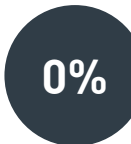
LEAD-FREE



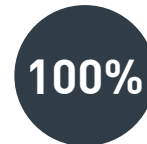
FIRE RETARDANT



SOLVENT & UV
PRINTABLE



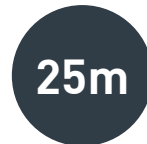
OPENNESS



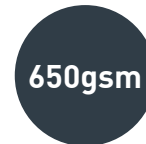
SHADE COVER



ROLL WIDTH



ROLL LENGTH



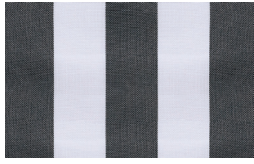
NOMINAL WEIGHT



Fabric Type	2 x 2 weave, PVC coated polyester mesh		
Tensile Strength (AS 2001.2.3.1 - 2001)	Warp: 980N/50mm Weft: 3600N/50mm	Elongation at Break	Warp: 19.5% Weft: 34.5%
Wing Rip (AS 2001.2.10-1986)	Warp: 58.1/N Weft: 19.9/N		

OUTLOOK® DESIGNS

Outlook Designs mesh is a selection of traditional stripes in a 12% openness construction. It offers aesthetic appeal and general weather protection.



640 ZEBRA



644 NAMBUCCA



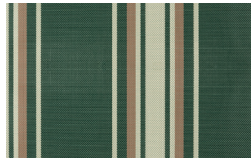
618 WANDA



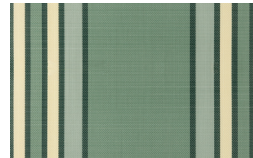
636 STRADBROKE



672 FEDERATION



648 DAINTREE



625 PALM BEACH



642 GUMLEAF



FULL 10-YEAR
UV WARRANTY



UV STABILISED



LEAD-FREE



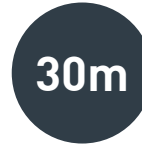
OPENNESS



SHADE COVER



ROLL WIDTH



ROLL LENGTH

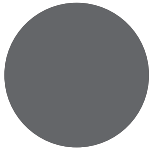


NOMINAL WEIGHT



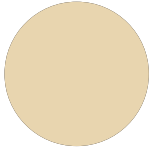
Fabric Type	2 x 1 weave, PVC coated polyester mesh		
Tensile Strength (AS 2001.2.3.1 - 2001)	Warp: 2675N/50mm Weft: 1145N/50mm	Elongation at Break	Warp: 28% Weft: 29%
Wing Rip (AS 2001.2.10-1986)	Warp: 171N Weft: 103N		

COLOURS TO COMPLEMENT YOUR STYLE



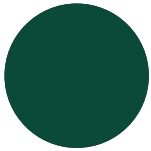
BASALT® BY COLORBOND

MODE COLOURS: 509 FLINT, 510 MOONLIGHT, 541 BASALT®, 551 ASH, 553 BLACKSTONE
TEXTURES: 907 ANISEED
PRIVACY: 400 EBONY, 407 BLACK OPAL, 441 BASALT®
ZERO: 517 CHALK, 539 SHALE GREY™, 541 BASALT®, 553 BLACKSTONE, 553 BLACKSTONE/CHALK, 541 BASALT®/CHALK, 542 MONUMENT®/CHALK
DESIGNS: 640 ZEBRA, 644 NAMBUCCA



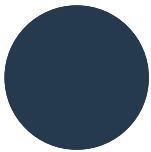
CLASSIC CREAM™ BY COLORBOND

MODE COLOURS: 572 PORCELAIN, 575 MARZIPAN
TEXTURES: 900 MILKY TOPAZ
ZERO: 566 ALPACA
DESIGNS: 618 WANDA, 644 NAMBUCCA



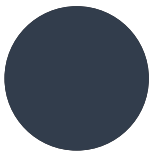
COTTAGE GREEN® BY COLORBOND

MODE COLOURS: 580 PALE EUCALYPT®, 599 FOREST GREEN
TEXTURES: 905 PEPPERMINT
ZERO: 580 PALE EUCALYPT®/CHALK
DESIGNS: 625 PALM BEACH, 642 GUMLEAF, 648 DAINTREE, 672 FEDERATION



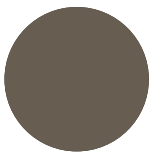
DEEP OCEAN® BY COLORBOND

MODE COLOURS: 503 DEEP SEA, 505 SILVER SKY
PRIVACY: 407 BLACK OPAL
DESIGNS: 618 WANDA



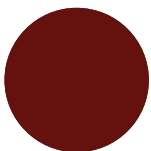
IRONSTONE® BY COLORBOND

MODE COLOURS: 505 SILVER SKY, 509 FLINT, 510 MOONLIGHT, 544 ECLIPSE, 551 ASH
TEXTURES: 907 ANISEED
PRIVACY: 401 GUNMETAL, 403 STORM, 408 SHADOW
ZERO: 541 BASALT, 542 MONUMENT, 553 BLACKSTONE
DESIGNS: 618 WANDA



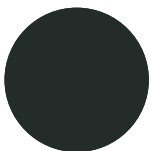
JASPER® BY COLORBOND

MODE COLOURS: 504 SPICE, 507 BAMBOO, 533 MOCHA, 566 ALPACA
TEXTURES: 901 GOLDEN GLOW, 902 HAVANA, 903 SMOKEY QUARTZ, 909 STUCCO
PRIVACY: 402 CHESTNUT, 409 COLORADO, 533 MOCHA
ZERO: 504 SPICE/CHALK, 566 ALPACA
DESIGNS: 618 WANDA, 642 GUMLEAF



MANOR RED® BY COLORBOND

OUTLOOK MODE COLOURS: 597 MAROON
OUTLOOK DESIGNS: 636 STRADBROKE, 672 FEDERATION



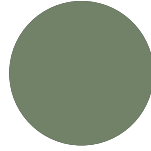
MONUMENT® BY COLORBOND

MODE COLOURS: 507 BAMBOO, 510 MOONLIGHT, 542 MONUMENT®, 509 FLINT, 551 ASH
TEXTURES: 907 ANISEED, 909 STUCCO
PRIVACY: 401 GUNMETAL, 403 STORM, 408 SHADOW, 412 MONUMENT®
ZERO: 541 BASALT, 541 BASALT/CHALK, 542 MONUMENT®, 542 MONUMENT®/CHALK, 538 WINDSPRAY, 538 WINDSPRAY/CHALK, 546 PLATINUM
DESIGNS: 640 ZEBRA, 644 NAMBUCCA



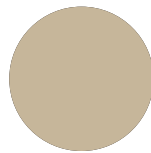
NIGHT SKY® BY COLORBOND

MODE COLOURS: 503 DEEP SEA, 507 BAMBOO, 509 FLINT, 510 MOONLIGHT, 541 BASALT, 542 MONUMENT, 544 ECLIPSE, 551 ASH, 553 BLACKSTONE
TEXTURES: 907 ANISEED
PRIVACY: 400 EBONY, 401 GUNMETAL, 403 STORM, 407 BLACK OPAL, 408 SHADOW, 411 BASALT, 412 MONUMENT
ZERO: 541 BASALT, 541 BASALT/CHALK, 542 MONUMENT, 542 MONUMENT/CHALK, 553 BLACKSTONE, 553 BLACKSTONE/CHALK
DESIGNS: 640 ZEBRA, 644 NAMBUCCA



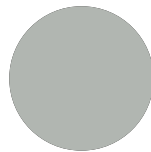
PALE EUCALYPT® BY COLORBOND

MODE COLOURS: 559 FOREST GREEN, 580 PALE EUCALYPT®
TEXTURES: 905 PEPPERMINT
ZERO: 580 PALE EUCALYPT/CHALK
DESIGNS: 625 PALM BEACH, 642 GUMLEAF, 648 DAINTREE



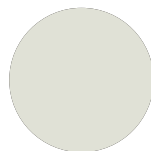
PAPERBARK® BY COLORBOND

MODE COLOURS: 507 BAMBOO, 508 NOUGAT, 529 WHEAT, 533 MOCHA, 566 ALPACA, 575 MARZIPAN
TEXTURES: 900 MILKY TOPAZ, 901 GOLDEN GLOW, 903 SMOKEY QUATRTZ, 909 STUCCO
PRIVACY: 400 EBONY, 401 GUNMETAL, 402 CHESTNUT, 404 PAPERBARK, 406 DESERT, 408 SHADOW, 412 MONUMENT
ZERO: 542 MONUMENT, 542 MONUMENT/CHALK, 553 BLACKSTONE, 553 BLACKSTONE/CHALK, 566 ALPACA
DESIGNS: 618 WANDA, 636 STRADBROKE, 642 GUMLEAF



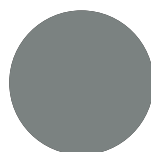
SHALE GREY™ BY COLORBOND

MODE COLOURS: 505 SILVER SKY, 510 MOONLIGHT, 526 GREYSTONE, 539 SHALE GREY™, 564 PLATINUM
ZERO: 539 SHALE GREY™/CHALK, 564 PLATINUM
DESIGNS: 644 NAMBUCCA



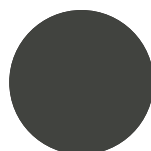
SURFMIST® BY COLORBOND

MODE COLOURS: 502 SURFMIST®, 505 SILVER SKY, 526 GREYSTONE
ZERO: 517 CHALK, 502 SURFMIST/CHALK
DESIGNS: 640 ZEBRA, 644 NAMBUCCA



WINDSPRAY® BY COLORBOND

MODE COLOURS: 526 GREYSTONE, 538 WINDSPRAY®
ZERO: 538 WINDSPRAY/CHALK
DESIGNS: 644 NAMBUCCA



WOODLAND GREY® BY COLORBOND

MODE COLOURS: 540 WOODLAND GREY®
TEXTURES: 907 ANISEED
PRIVACY: 400 EBONY, 403 STORM
ZERO: 540 WOODLAND GREY/CHALK, 553 BLACKSTONE
DESIGNS: 644 NAMBUCCA

ONLY OUTLOOK USES PLASTICISERS, WHY SHOULD YOU?

Plasticisers give fabrics their pliability, or unique ability to bend and flex without cracking, breaking or holding memory. Fabrics made with Dow Ecolibrium bio-based plasticisers offer a renewable, plant-based alternative to those made with traditional petroleum-based plasticisers, lowering greenhouse gases by 40%. This technology also improves performance, offering the benefits of heat stability, durability, abrasion resistance and UV resistance.



98% of the plasticiser is derived from non fossil fuel based feed stock



Phthalate and lead free composition



Ability for compound to be recycled in a standard vinyl stream



Durable and cleanable



Lowers greenhouse gases by **40%**

EVERY 5M² OF OUTLOOK FABRIC SAVES...



1kg of CO₂

+



500ml of petroleum

THE AVERAGE HOME USING OUTLOOK SAVES...



Up to **12kg** of CO₂ and **6L** of petrol*

*Calculated based on a house with 6 x 10m² sized blinds



Ricky Richards (Sales) Pty. Ltd | ABN 18 000 946 725
02 9735 3333
sales@rickyrichards.com.au
rickyrichards.com.au

NOVEMBER 2023

Information contained in this brochure is accurate and based on the latest product information available at the time.
Please be aware that a slight colour difference may occur when using different online devices or when printed.

While Ricky Richards (Sales) P/L makes all efforts to provide accurate information,
we maintain the right to make changes as necessary.



OUTLOOK