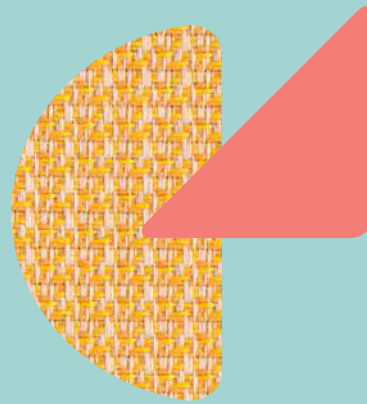




Upholstery

# JOY

COLLECTION



**BLISS**

EMOTIONAL PERFORMANCE FABRICS



# BLISS

EMOTIONAL PERFORMANCE FABRICS

BLISS is a new brand created by people who have been in the textile industry for a very long time. We have inherited the technical knowledge and resources of Citel – the outdoor performance fabrics manufacturer founded back in 1875 in Barcelona – and added a special sensitivity and aesthetic perspective. BLISS mission is to manufacture performance and decorative fabrics made by and for the senses.

Our team wanted to create a brand that not only demonstrated their technical know-how regarding 100% solution-dyed acrylic fabrics, but also expressed their philosophy of life. BLISS is built on passion, new ideas, effort and an ongoing desire for improvement.

**Creating is our favourite state of mind - our bliss -, and the desire to imagine, envision and manufacture fabrics that are truly special is our very reason for being.**

## JOY collection

Optimism is in our DNA. We create fabrics because this is what makes us happy, and we would like to convey this feeling through our Joy collection. Our desire is to help people listen to their emotions, focus on what is important in life and appreciate the little moments.

**The Joy collection is based on the passion, intensity and euphoria that we experience when we are in our Creative Lab surrounded by colours, yarns and crazy ideas.**

These colours and textures are the ones that really make us feel Bliss. The purpose of this collection is aim to create happy outdoor living spaces.



*100% solution dyed acrylic*

## JOY COLLECTION

Composition:	100% solution dyed acrylic
Outdoor and indoor use	  
Width:	140 cm (55")
Roll length:	50 m (55 yards)
Warranty:	5 years

### Features



### Flame retardancy

NFPA 260 EN 1021-1 BS 5852-1(54) CA TB 117

### Cleaning instructions

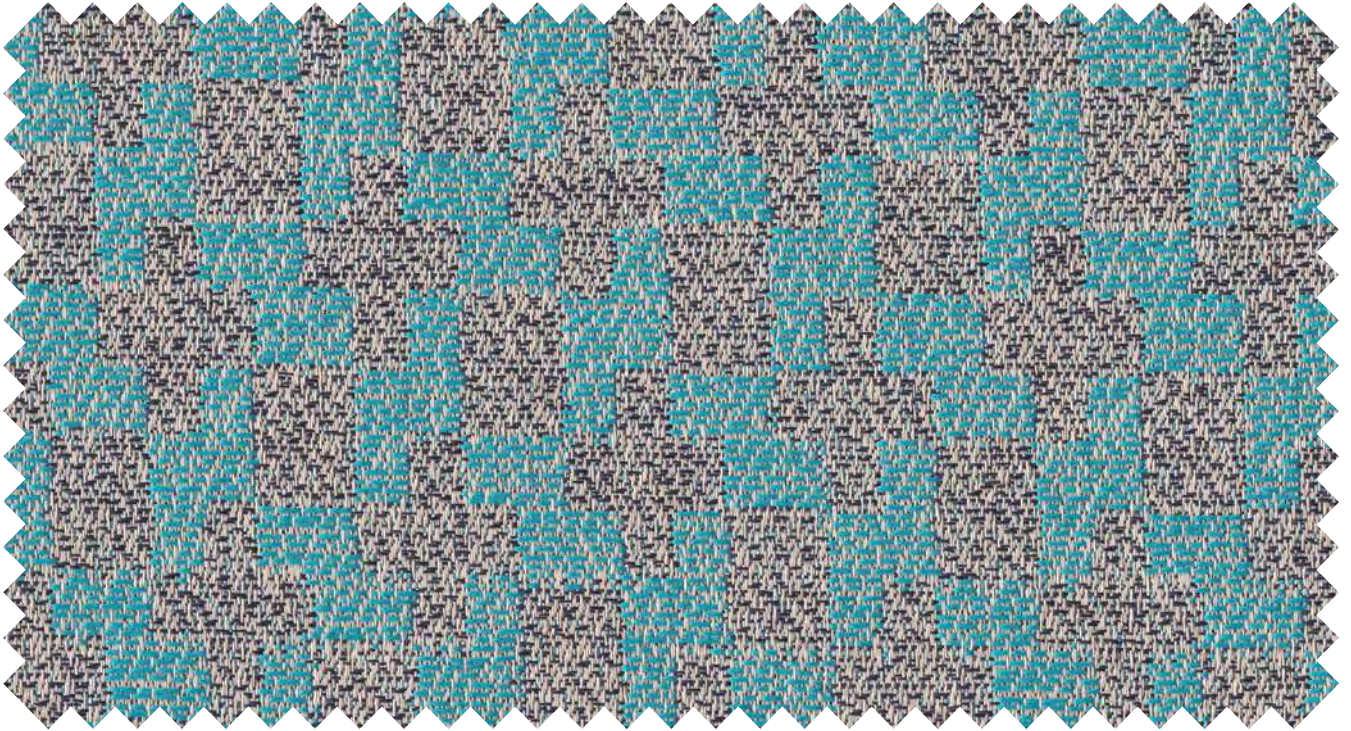


Technical data	Standard	Bloom	Live	Passion
Weight (g/m <sup>2</sup> ):	UNE 40339	420	330	400
Rapport: (H x V)		-	17,5 x 23 cm 6,89 x 9"	-
Spray Test (max. 100)	UNE-EN ISO 4920	100	100	100
Oil repellency (Max 6)	AATCC 118	6	6	6
Colour fastness to artificial weathering (max. 8):	UNE-EN ISO 105-B04	7-8	7-8	7-8
Colour fastness to artificial light (max 8)	UNE-EN ISO 105-B02	7-8	7-8	7-8
Colour fastness to chlorinated water (swimming-pool water) (max. 5):	UNE-EN ISO 105-E03	5	5	5
Colour fastness to sea water (max. 5):	UNE-EN ISO 105-E02	5	5	5

Tolerance +/- 5% average values. Non-contractual information. The data are result of tests performed in our laboratories. For more technical information, please contact us at [info@blissfabrics.es](mailto:info@blissfabrics.es)

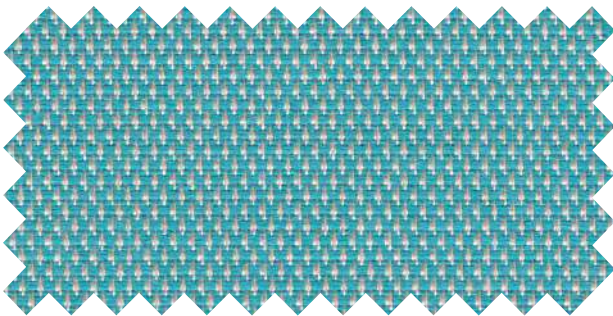
**B**

JOY COLLECTION



←→  
Weft direction

01142 Live Blue Aruba  
Rapport (H x V): 17,5 x 23 cm / 6,89 x 9"



←→  
Weft direction

01149 Bloom Aruba



←→  
Weft direction

01147 Passion Aruba

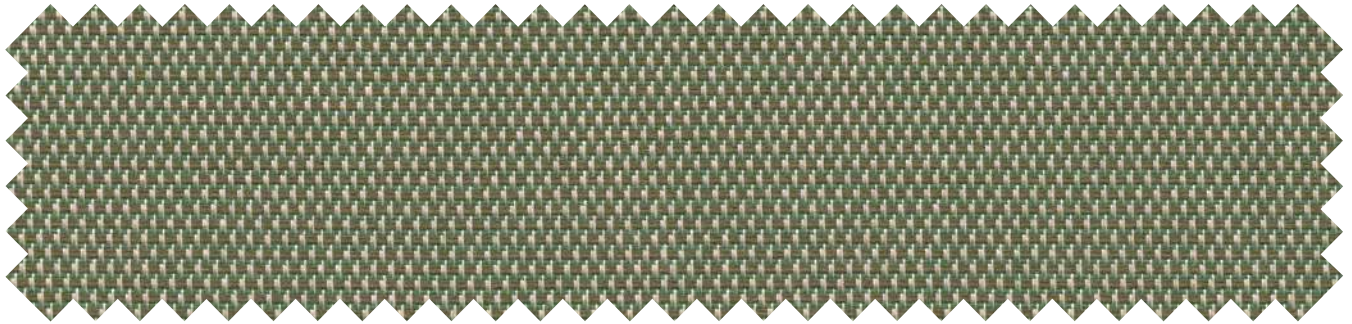


←→  
Weft direction

01146 Passion Dark Blue

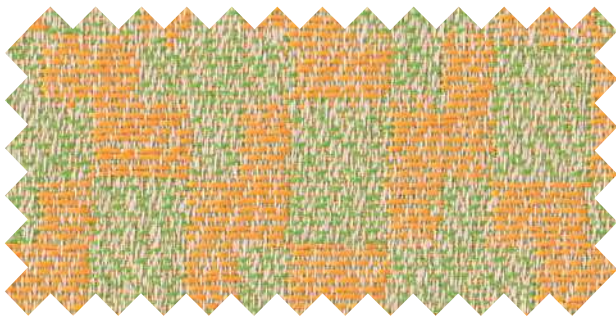


JOY COLLECTION



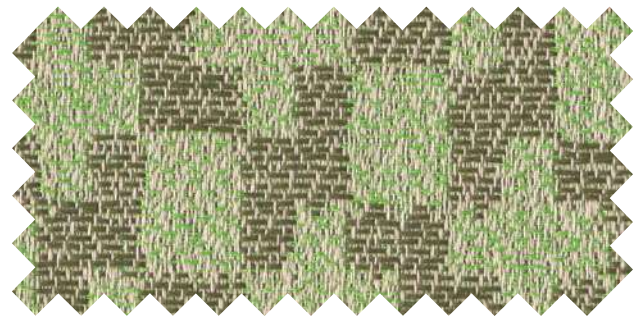
←→  
Weft direction

01150 Bloom Moss



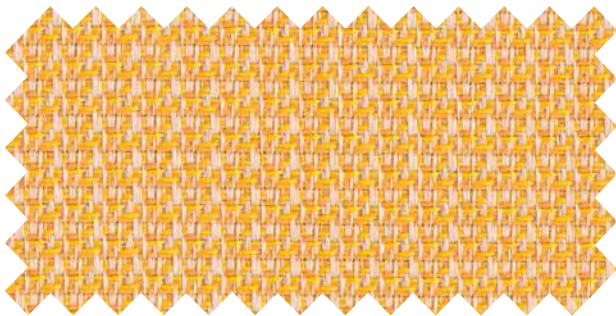
←→  
Weft direction

01144 Live Green Mandarin  
Rapport (H x V): 17,5 x 23 cm / 6,89 x 9"



←→  
Weft direction

01143 Live Green Moss  
Rapport (H x V): 17,5 x 23 cm / 6,89 x 9"



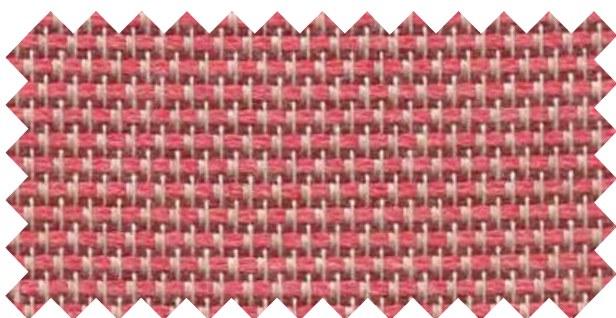
←→  
Weft direction

01148 Passion Marigold



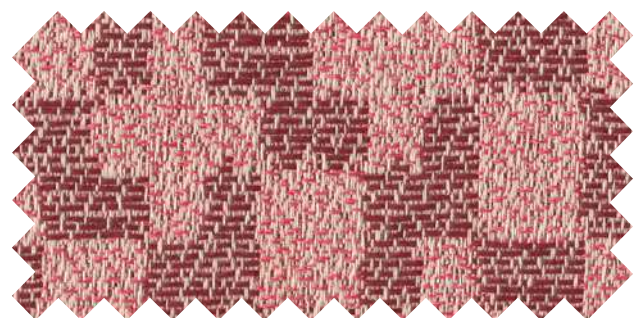
←→  
Weft direction

01141 Live Blue Mandarin  
Rapport (H x V): 17,5 x 23 cm / 6,89 x 9"




←→  
Weft direction

01151 Bloom Pink

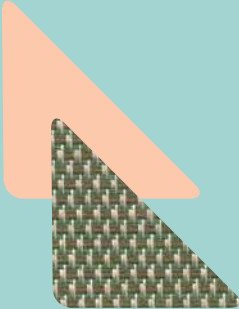


←→  
Weft direction



01145 Live Pink Wine  
Rapport (H x V): 17,5 x 23 cm / 6,89 x 9"



*We have had a long and beautiful love story with textiles for more than 100 years. Now, we are ready for this new chapter in which we have found our true-self.*



*We will keep working to make Bliss a design-led innovator and fuse the technical branch of performance fabrics with the boundless creativity of the world of emotions, fashion and decorative textiles.*



blissfabrics.com

*Designed and manufactured with passion in Barcelona*

**BLISS**  
EMOTIONAL PERFORMANCE FABRICS

by **Citel**<sup>®</sup>

EXCLUSIVELY DISTRIBUTED BY

 **ricky**

www.rickyrichards.com.au

